

2025-2026

# A LEVEL

## Subject Information



Solihull College  
& University Centre

Stratford-upon-Avon  
College



# Accounting



## A-Level

Tutor: Abdullah Zaman

### Course Aims

AQA A-Level Accounting aims to provide students with a clear understanding of an accountant's responsibilities. Students will acquire knowledge of financial, cost and management accounting, including key concepts and techniques. Through real-life scenarios, students will develop practical skills in financial analysis. They will learn how to make informed recommendations, preparing them for future success in industry.

### Course Content

- An introduction to the role of the accountant in business, types of business organisation, and the double entry model
- Verification of accounting records, accounting concepts used in the preparation of accounting records, preparation of financial statements of sole traders, and limited company accounts
- Analysis and evaluation of financial information, budgeting, marginal costing, standard costing and variance analysis, absorption and activity-based costing, and capital investment appraisal
- Accounting for organisations with incomplete records, partnership accounts, and accounting for limited companies
- Interpretation, analysis and communication of accounting information
- The impact of ethical considerations

### What makes a successful A-Level Accounting student?

- Demonstrating an ability to analyse information, including critical thinking
- Working with accuracy and a keen eye for detail
- Using problem-solving skills to overcome challenges
- Using verbal and written communication skills to deliver recommendations with confidence and clarity

### Entry Requirements

GCSE Mathematics at grade 6 or above plus four further GCSEs at grade 5 and above – this must include GCSE English Language.

### How will I be assessed?

There will be exams at the end of year two:

- Two written exams
- Each exam is three hours long
- Each exam is worth 50% of the A-Level

### Progression

Higher Education and careers in accountancy and related fields, such as banking, insurance, retail and public services.



**Solihull College  
& University Centre**

# Business

## A-Level

Tutor: Rozina Abbas



### Course Aims

AQA A-Level Business aims to help students gain a rounded understanding of Business in a range of contexts. Students will explore business concepts by learning about real-world scenarios. The course provides opportunities to study key contemporary developments, including digital technology, business ethics and globalisation. Students will develop the ability to analyse data, think critically about issues and make informed decisions – all skills that are needed for further study and future employment.

### Course Content

- What is business?
- Managers, leadership and decision-making
- Marketing management, operational management, financial management, and human resource management
- Analysing the strategic position of a business, choosing strategic direction, strategic methods: how to pursue strategies, and managing strategic change

### What makes a successful A-Level Business student?

- Applying numerical skills in a range of business contexts
- Creative thinking and challenging assumptions with confidence
- Using problem-solving skills to overcome challenges
- Using verbal and written communication skills to convey ideas, persuade others and collaborate effectively

### Entry Requirements

Five GCSEs at grade 5 and above. This must include GCSE English Language and GCSE Mathematics

### How will I be assessed?

There will be exams at the end of year two:

- Three written exams
- Each exam is two hours long
- Each exam is worth 33.3% of the A-Level

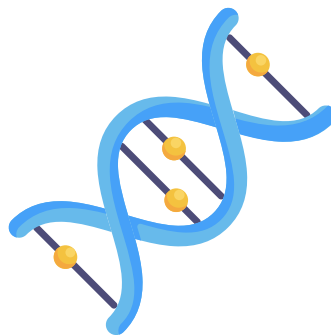
### Progression

Higher Education and careers in accountancy, enterprise and management



**Solihull College  
& University Centre**

# Chemistry



## A-Level

Tutors: Fabio Lorenzini  
Steve Round

### Course Aims

Edexcel A-Level Chemistry aims to help students develop their understanding of the different areas of Chemistry and how they relate to each other. Students will have the opportunity to learn how society makes decisions about scientific issues, as well as understanding how Chemistry contributes to the success of the economy. This course is designed to help students become confident practical chemists with risk management, mathematical and problem-solving skills.

### Course Content

- Atomic Structure and the Periodic Table, Bonding and Structure, Redox I and II, Inorganic Chemistry and the Periodic Table, and Formulae, Equations and Amounts of Substance
- Organic Chemistry I, II and III, Modern Analytical Techniques I and II, Energetics I and II, Kinetics I and II, and Equilibrium I and II
- Acid-base Equilibria, Transition Metals

### What makes a successful A-Level Chemistry student?

- Demonstrating an ability to analyse information, including critical thinking
- Learning from other students by embracing group work
- Thriving on exploring science through investigation
- Communicating scientific findings with clarity and confidence

### How will I be assessed?

At the end of year two, there will be three written exams:

- Paper 1: Advanced Inorganic and Physical Chemistry - 30% of A-Level (1 hour 45 minutes)
- Paper 2: Advanced Organic and Physical Chemistry - 30% of A-Level (1 hour 45 minutes)
- Paper 3: General and Practical Principles in Chemistry - 40% of A-Level (2 hours 30 minutes)

### Entry Requirements

GCSE Chemistry and Mathematics at grade 6 or above plus three further GCSEs at grade 5 and above – this must include GCSE English Language

### Progression

Higher Education and careers in biomedical science, environmental science, forensic science, materials science, veterinary science, medicine and pharmacy.



Solihull College  
& University Centre

# English Language & Literature



## A-Level

Tutors: Humma Mouza  
Megan Wakefield

### Course Aims

AQA A-Level English Language and Literature enables students to see how linguistic and literary methods are related. Students will explore how power, culture and identities can be communicated in written and spoken language. They will study a wide range of literary and non-literary texts, including an anthology titled *Paris*, a modern novel, poetry and a play.

### Course Content

- Methods of language analysis are integrated into activities in the following areas:
- Telling Stories: Remembered Places, Imagined Worlds, and Poetic Voices
- Exploring Conflict: Writing about Society, Critical Commentary, and Dramatic Encounters
- Making Connections: coursework based on independent reading around a theme of the student's choice, comparing literary and non-literary texts

### What makes a successful A-Level English Language and Literature student?

- Demonstrating a commitment to independent reading
- Analysing texts with a keen eye for detail and willingness to explore different interpretations
- Using writing skills to convey ideas with clarity
- Enthusiastically engaging in discussions about themes, characterisation and context

### How will I be assessed?

There will be two exams at the end of year two plus coursework:

- Telling Stories (3 hour written exam)
- Exploring Conflict (2 hours 30 minutes written exam)
- Making Connections (2,500–3,000 word coursework)  
Assessed by tutors and moderated by AQA

### Progression

Students could progress to Higher Education and careers like teaching, journalism, publishing and marketing. The skills developed are also valued in the fields of business, management and law.

### Entry Requirements

GCSE English Language and GCSE English Literature both at a grade 6 or above, plus three further GCSEs at grade 5 and above – this must include GCSE Mathematics.



Solihull College  
& University Centre



# English Literature



## A-Level

Tutors: Shabnum Bashir  
Lucy Hammond  
Humma Mouzam

### Course Aims

AQA A-Level English Literature is an engaging and exciting approach to the study of literature through the ages. This course encourages the independent study of a variety of texts. Students will develop a wide range of skills valuable for both further study and future employment. These skills include critical reading and the ability to undertake independent research.

### Course Content

Students will study a Shakespeare play and a poetry anthology, all through the lens of Love through the Ages. This course also involves studying a novel and producing a piece of writing based on independent study.

### What makes a successful A-Level English Literature student?

- Demonstrating a commitment to independent research
- Analysing texts with a keen eye for detail and willingness to explore different interpretations
- Using writing skills to convey ideas with clarity

### How will I be assessed?

There will be two exams at the end of year two plus coursework:

- Paper 1- 40% of A-Level (3 hour written exam)
- Paper 2- 40% of A-Level (2 hours 30 minute written exam)
- Coursework - 20% of A-Level: marked by tutors and moderated by AQA

### Entry Requirements

GCSE English Literature at a grade 6 or above, plus four further GCSEs at grade 5 and above – this must include GCSE Mathematics and English

### Progression

Students could progress to Higher Education and careers in teaching, journalism and information services, such as librarianship. The skills developed are also valued in the fields of business and management.



Solihull College  
& University Centre

# History

# A-Level

Tutor: Chris Hourihan



## Course Aims

AQA A-Level History aims to help students explore the roles of individuals in history and the significance of historical events. This course will develop understanding of modern British and European history and help students to acquire the skills of a historian. Students will have the opportunity to gain a deeper understanding of the past, including economic, cultural, political and social perspectives. They will evaluate evidence from academic history books and synthesise conclusions – a valuable skill for further study and future employment.

## Course Content

- Breadth study: Germany 1918–45
- Depth study: Stuart Britain 1603–1702
- Coursework:
  - » 3500–4500 words
  - » Student's topic of choice – a question in the context of approximately 100 years (not duplicating the content of the breadth and depth studies)

## What makes a successful A-Level History student?

- Demonstrating a commitment to reading and research
- Seeking out new information and perspectives about the past
- Using critical thinking to evaluate evidence
- Using written and verbal communication skills to express ideas clearly and persuasively

## How will I be assessed?

There will be two exams at the end of year two plus coursework:

- Breadth study written exam - 40% of A-Level (2 hours 30 minutes)
- Depth study written exam - 40% of A-Level (2 hours 30 minutes)
- Coursework - 20% of A-Level. Marked by tutor and moderated by AQA

## Progression

Students could progress to Higher Education and careers like teaching and museum work. The skills developed are also valued in public services, business and journalism.

## Entry Requirements

Five GCSEs at grade 5 and above – this must include GCSE English Language and GCSE Mathematics



**Solihull College  
& University Centre**



## Course Aims

AQA A-Level Law aims to give students an understanding of the role of Law in society and raises their awareness of individual rights and responsibilities. Topics include the nature of law and the English legal system, private law, public law and legal skills. Students will learn about legal rules and how and why they apply to real life.

## Course Content

- The nature of law and the English legal system
- Criminal law
- Tort
- Law of contract
- Human rights

## What makes a successful A-Level Law student?

- Demonstrating a commitment to reading around theories and case studies
- Using critical thinking to examine problems, identify issues and develop logical arguments
- Using written and verbal communication skills to convey arguments with confidence

## How will I be assessed?

At the end of year two, there will be three written exams:

- Paper 1: Criminal Law: The nature of law and the English legal system - 33.3% of A-Level (2 hours)
- Paper 2: Tort: The nature of law and the English legal system - 33.3% of A-Level (2 hours)
- Paper 3: Law of contract or human rights: The nature of law and the English legal system - 33.3% of A-Level (2 hours)

## Entry Requirements

Five GCSEs at grade 5 and above – this must include GCSE English Language and GCSE Mathematics

## Progression

Higher Education and working in the probation service, court services and police, as well as Solicitor, Barrister, Legal Executive and Paralegal careers





# Mathematics

## A-Level

Tutors: Balbinder Paneser



### Course Aims

Edexcel A-Level Mathematics helps students to understand mathematical processes in a way that fosters confidence and enjoyment. Students are encouraged to see the links between different areas of Mathematics, as well as understanding how their mathematical skills can be applied to other fields of study. This course develops a valuable skillset, including problem-solving skills and the ability to make logical and reasoned decisions.

### Course Content

- **Pure Mathematics:** proof, algebra and functions, coordinate geometry in the  $(x, y)$  plane, sequences and series, trigonometry, exponentials and logarithms, differentiation, integration, numerical methods, and vectors
- **Statistics:** sampling, data presentation and interpretation, probability, statistical distributions, and hypothesis testing
- **Mechanics:** quantities and units in mechanics, kinematics, forces and Newton's laws, and moments

### What makes a successful A-Level Mathematics student?

- Tackling challenges with a positive mindset and determination to learn from mistakes and setbacks
- Using written and verbal communication skills to convey mathematical reasoning and solutions with confidence and clarity
- Taking personal responsibility for learning, including self-evaluation of progress

### Entry Requirements

GCSE Mathematics at grade 6 or above plus four further GCSEs at grade 5 and above – this must include GCSE English Language.

### How will I be assessed?

At the end of year two, there will be three written exams and each exam will last two hours:

- Paper 1: Pure Mathematics 1 (33.3% of A-Level)
- Paper 2: Pure Mathematics 2 (33.3% of A-Level)
- Paper 3: Statistics and Mechanics (33.3% of A-Level)

### Progression

Higher Education and careers in accountancy, computing, economics, engineering and science.



Solihull College  
& University Centre

# Art and Design (Photography)



## A-Level

Tutors: Clive Adams

### Course Aims

AQA A-Level Art and Design (Photography) enables students to explore a variety of photographic media, techniques and processes. This course covers both traditional and digital technologies. Students will investigate past and recent images, artefacts and resources, including European and non-European examples. They will gain an understanding of the elements of visual language, as well as an awareness of the purpose of their chosen specialist area.

### Course Content

#### Genres of photography:

Portraiture, landscape, documentary, fashion, experimental image-making, and moving image

#### Skills and techniques:

- Responding to briefs
- Exploring line, form, colour, pattern and texture
- Appreciation of viewpoint, composition, aperture, depth of field, shutter speed and movement
- Using cameras, film, lenses, filters and lighting
- Production, presentation and layout of images

#### Knowledge and understanding:

- Materials, processes, technologies and resources
- Conveying and interpreting ideas, feelings and meanings
- Historical and contemporary developments
- Social, environmental, cultural and ethical contexts
- Continuity and change in different styles, genres and traditions

### What makes a successful A-Level Photography student?

- Practising techniques, experimenting and embracing feedback
- Demonstrating the ability to read and interpret images
- Appreciating different social and cultural perspectives

### Entry Requirements

A GCSE in an art-related subject at grade 5 or above, plus four GCSEs at grade 5 and above – this must include GCSE English Language and GCSE Mathematics

### How will I be assessed?

Students will be assessed via practical work and their portfolio:

- Personal investigation - 60% of A-Level (no time limit). Marked by tutor and moderated by AQA
- Externally set assignment - 40% of A-Level (Preparatory period plus 15 hours of supervised time). Marked by the tutor and moderated by AQA

### Progression

Higher education and careers in freelance photography, medical photography and forensic photography, as well as working in the creative industries.



Solihull College  
& University Centre

# Psychology



## A-Level

Tutors: Kayleigh Oakley

### Course Aims

AQA A-Level Psychology is designed to stimulate enthusiasm for learning about human behaviour and mental processes. The course aims to foster a thorough understanding of psychological theories and research methods. Students will have the opportunity to develop a valuable skillset, including communication, data analysis and problem-solving skills. These skills will help to ensure that students are ready for Higher Education and careers in Psychology.

### Course Content

- **Introductory Topics in Psychology:** Social Influence, Memory, and Attachment
- **Psychology in Context:** Approaches in Psychology, Psychopathology, and Research Methods
- **Issues and Options in Psychology:** Issues and Debates, Gender, Schizophrenia, and Forensic Psychology

### What makes a successful A-Level Psychology student?

- Using critical thinking to evaluate psychological theories and research
- Demonstrating the ability to apply concepts to real-life situations
- Engaging in discussions with enthusiasm
- Using written and verbal communication skills to convey ideas with clarity

### How will I be assessed?

At the end of year two, there will be three written exams and each exam will last two hours:

- Introductory Topics in Psychology (33.3% of A-Level)
- Psychology in Context (33.3% of A-Level)
- Issues and Options in Psychology (33.3% of A-Level)

### Entry Requirements

Five GCSEs at grade 5 and above. This must include GCSE English Language and GCSE Mathematics

### Progression

Students could progress to Higher Education and careers like teaching or the helping professions. Psychology is also valued in the fields of business, sport and forensics.



Solihull College  
& University Centre

# Sociology



## A-Level

### Course Aims

AQA A-Level Sociology focuses on contemporary society. This course fosters awareness of the importance of social structure and social action in explaining social issues. Students are encouraged to develop a thorough understanding of sociological theories and concepts. They are also encouraged to evaluate sociological methodology through active involvement in the research process.

### Course Content

- **Mandatory units during year one:** Education, Methods in Context, and Theory and Methods
- **Optional topics during year one and year two:** Families and Households (year one), Beliefs in Society (year two)
- **Mandatory units during year two:** Crime and Deviance, Theory and Methods

### What makes a successful A-Level Sociology student?

- Demonstrating a commitment to reading and research
- Using critical thinking to evaluate social issues and research
- Respecting social diversity and keeping an open mind
- Participating in discussions and debates with enthusiasm

### How will I be assessed?

At the end of year two, there will be three written exams and each exam will last two hours:

- Education with Theory and Methods (33.3% of A-Level)
- Topics in Sociology (33.3% of A-Level)
- Crime and Deviance with Theory and Methods (33.3% of A-Level)

### Progression

Students could progress to Higher Education and careers like social work, teaching, and nursing. Sociology is also valued in the fields of public policy, human resources, research, and police and probation.

### Entry Requirements

Five GCSEs at grade 5 and above – this must include GCSE English Language and GCSE Mathematics



Solihull College  
& University Centre