

2026-2027

A LEVEL

Subject Information



Solihull College
& University Centre

Stratford-upon-Avon
College



Options & Entry Requirements

Options		
Option A: choose one	Option B: choose one	Option C: choose one
Business	Accounting	English Literature
Chemistry*	Applied Science*	Mathematics
Criminology	Biology	Photography
Media Studies	History	Politics
Sociology	Law	Psychology

*Applied Science and Chemistry cannot be studied together

PPD and Study Skills are compulsory elements of the A-Level Programme.

Entry Requirements	
Subject	Entry Requirements
General entry criteria	Five GCSEs at grade 5 and above, including English Language and Mathematics
The following subjects have additional or specific GCSE requirements on top of the general entry criteria:	
Accounting Mathematics	<ul style="list-style-type: none"> GCSE Mathematics at grade 6 or above Four further GCSEs at grade 5 and above, including English Language
Applied Science*	<ul style="list-style-type: none"> Five GCSEs at grade 5 and above, including English Language, Mathematics and Science
Biology	<ul style="list-style-type: none"> GCSE Biology/Combined Science and Mathematics at grade 6 and above Three further GCSEs at grade 5 and above, including English Language
Chemistry	<ul style="list-style-type: none"> GCSE Chemistry/Combined Science and Mathematics at grade 6 and above Three further GCSEs at grade 5 and above, including English Language
Photography	<ul style="list-style-type: none"> A GCSE in an art-related subject at grade 5 or above Four GCSEs at grade 5 and above, including English Language and Mathematics

Personal Progress Development (PPD)

Course Aims

The aim of PPD is to equip students for a Modern Day Britain by helping them to develop new skills, attitudes and behaviours. PPD includes weekly contact with a Personal Development Coach, building positive pastoral relationships that enable students to progress and thrive. PPD provides everything students need to reach their full potential during their A-Level Programme and future careers.



PERSONAL



PROGRESS



DEVELOPMENT



Compulsory Module

Tutor: CJ Anderson

Course Content

- Career Planning & Employability
- Equality, Diversity & Inclusion
- Fundamental British Values
- Healthy Relationships & Consent
- Personal Growth
- Prevent
- Public Sexual Harassment
- Sustainability

What makes a successful PPD student?

- Respecting social diversity
- Participating in discussions with enthusiasm
- Using critical and creative thinking to identify and overcome challenges
- Identifying next steps and setting goals effectively

Study Skills

Course Aims

The aim of Study Skills is to help students to learn more effectively, manage their workload and improve their academic performance. During these sessions, students are encouraged to work out which learning strategies suit them best, becoming more independent and motivated learners.



Solihull College
& University Centre



Compulsory Module

Tutors: Rachel Arnold
Humma Mouzam

Course Content

- Learning styles
- Effective notetaking
- Time management
- Revision tips

What makes a successful Study Skills student?

- Nurturing a positive, proactive study mindset and identifying areas for improvement
- Using problem-solving skills to overcome challenges
- Sharing ideas about study habits and listening to others

Accounting



A-Level

Tutor: Abdullah Zaman

Course Aims

AQA A-Level Accounting aims to provide students with a clear understanding of an accountant's responsibilities. Students will acquire knowledge of financial, cost and management accounting, including key concepts and techniques. Through real-life scenarios, students will develop practical skills in financial analysis. They will learn how to make informed recommendations, preparing them for future success in industry.

Course Content

- An introduction to the role of the accountant in business, types of business organisation, and the double entry model
- Verification of accounting records, accounting concepts used in the preparation of accounting records, preparation of financial statements of sole traders, and limited company accounts
- Analysis and evaluation of financial information, budgeting, marginal costing, standard costing and variance analysis, absorption and activity-based costing, and capital investment appraisal
- Accounting for organisations with incomplete records, partnership accounts, and accounting for limited companies
- Interpretation, analysis and communication of accounting information
- The impact of ethical considerations

What makes a successful A-Level Accounting student?

- Demonstrating an ability to analyse information, including critical thinking
- Working with accuracy and a keen eye for detail
- Using problem-solving skills to overcome challenges
- Using verbal and written communication skills to deliver recommendations with confidence and clarity

Entry Requirements

GCSE Mathematics at grade 6 or above plus four further GCSEs at grade 5 and above – this must include GCSE English Language.

How will I be assessed?

There will be exams at the end of year two:

- Two written exams
- Each exam is three hours long
- Each exam is worth 50% of the A-Level

Progression

Higher Education and careers in accountancy and related fields, such as banking, insurance, retail and public services.



**Solihull College
& University Centre**

Biology

A-Level



Course Aims

OCR A-Level Biology aims to help students explore a range of fascinating aspects of life processes and living things. Students will have the opportunity to learn how society makes decisions about scientific issues, as well as understanding how biology contributes to the success of the economy. Students will deepen their understanding of biological concepts and scientific methods by working in well-equipped labs. This course is designed to develop competence in a variety of practical, mathematical and problem-solving skills. It is ideal for students who enjoy scientific investigation and want to pursue a career in science, medicine or other areas of healthcare.

Entry Requirements

GCSE Biology or Combined Science and GCSE Mathematics at grade 6 or above plus three further GCSEs at grade 5 and above – this must include GCSE English Language.

Course Content

- Development of practical skills in biology
- Foundations in biology
- Exchange and transport
- Biodiversity, evolution and disease
- Communication, homeostasis and energy
- Genetics, evolution and ecosystems

What makes a successful A-Level Biology student?

- Demonstrating strong biological knowledge
- Making detailed notes and summaries
- Demonstrating excellent time management, e.g. organised study timetable
- Revising in a strategic way, practising exam questions and understanding mark schemes
- Nurturing a positive, proactive study mindset, identifying areas for improvement

How will I be assessed?

Three written exams plus Practical Endorsement:

- Paper 1 (2 hours 15 minutes): Biological processes (37% of A-Level)
- Paper 2 (2 hours 15 minutes): Biological diversity (37% of A-Level)
- Paper 3 (1 hour 30 minutes): Unified biology (26% of A-Level)
- Practical Endorsement: a non-exam assessment reported separately from the overall A-Level grade

Progression

Higher Education and careers in biology, veterinary science, dentistry, medicine and other areas of healthcare.



**Solihull College
& University Centre**

Business

A-Level

Tutor: Rozina Abbas



Course Aims

AQA A-Level Business aims to help students gain a rounded understanding of Business in a range of contexts. Students will explore business concepts by learning about real-world scenarios. The course provides opportunities to study key contemporary developments, including digital technology, business ethics and globalisation. Students will develop the ability to analyse data, think critically about issues and make informed decisions – all skills that are needed for further study and future employment.

Course Content

- What is business?
- Managers, leadership and decision-making
- Marketing management, operational management, financial management, and human resource management
- Analysing the strategic position of a business, choosing strategic direction, strategic methods: how to pursue strategies, and managing strategic change

What makes a successful A-Level Business student?

- Applying numerical skills in a range of business contexts
- Creative thinking and challenging assumptions with confidence
- Using problem-solving skills to overcome challenges
- Using verbal and written communication skills to convey ideas, persuade others and collaborate effectively

Entry Requirements

Five GCSEs at grade 5 and above. This must include GCSE English Language and GCSE Mathematics

How will I be assessed?

There will be exams at the end of year two:

- Three written exams
- Each exam is two hours long
- Each exam is worth 33.3% of the A-Level

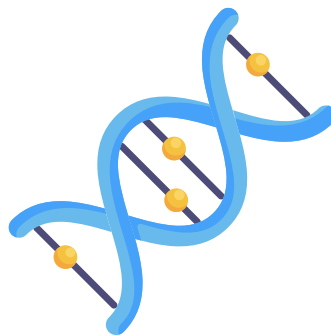
Progression

Higher Education and careers in accountancy, enterprise and management



**Solihull College
& University Centre**

Chemistry



A-Level

Tutors: Fabio Lorenzini
Steve Round

Course Aims

Edexcel A-Level Chemistry aims to help students develop their understanding of the different areas of Chemistry and how they relate to each other. Students will have the opportunity to learn how society makes decisions about scientific issues, as well as understanding how Chemistry contributes to the success of the economy. This course is designed to help students become confident practical chemists with risk management, mathematical and problem-solving skills.

Course Content

- Atomic Structure and the Periodic Table, Bonding and Structure, Redox I and II, Inorganic Chemistry and the Periodic Table, and Formulae, Equations and Amounts of Substance
- Organic Chemistry I, II and III, Modern Analytical Techniques I and II, Energetics I and II, Kinetics I and II, and Equilibrium I and II
- Acid-base Equilibria, Transition Metals

What makes a successful A-Level Chemistry student?

- Demonstrating an ability to analyse information, including critical thinking
- Learning from other students by embracing group work
- Thriving on exploring science through investigation
- Communicating scientific findings with clarity and confidence

How will I be assessed?

At the end of year two, there will be three written exams:

- Paper 1: Advanced Inorganic and Physical Chemistry - 30% of A-Level (1 hour 45 minutes)
- Paper 2: Advanced Organic and Physical Chemistry - 30% of A-Level (1 hour 45 minutes)
- Paper 3: General and Practical Principles in Chemistry - 40% of A-Level (2 hours 30 minutes)

Progression

Higher Education and careers in biomedical science, environmental science, forensic science, materials science, veterinary science, medicine and pharmacy.

Entry Requirements

GCSE Chemistry and Mathematics at grade 6 or above plus three further GCSEs at grade 5 and above – this must include GCSE English Language



Solihull College
& University Centre

Criminology



AAQ

Alternative Academic Qualification
(equivalent to one A-Level)

Course Aims

WJEC Level 3 Applied Diploma in Criminology – Alternative Academic Qualification (AAQ) equivalent to one A-Level

AAQ Criminology aims to provide a scientific, academic foundation in the study of crime, covering its causes and impact, as well as the criminal justice system. There is a focus on developing critical analysis, judgement and communication skills. This course is designed to support progression to Higher Education degrees in criminology, law, psychology and sociology. Also, this course can lead to potential careers in the criminal justice sector like the probation service, court services and the police.

Course Content

Students must complete all the following units:

1. Changing Awareness of Crime
2. Criminological Theories
3. Crime Scene to Courtroom
4. Crime and Punishment

What makes a successful AAQ Criminology student?

- Combining analytical and critical thinking with strong research and communication skills
- Handling sensitive information with ethics and integrity
- Applying a sceptical “criminological imagination” to understanding societal issues and challenging assumptions
- Demonstrating good time management, effective collaboration and the ability to work with data

How will I be assessed?

The following units are externally assessed through examination:

- Unit 2 (25% of AAQ): Criminological Theories
- Unit 4 (25% of AAQ): Crime and Punishment

The following units are internally assessed through summative assessment methods:

- Unit 1 (25% of AAQ): Changing Awareness of Crime
- Unit 3 (25% of AAQ): Crime Scene to Courtroom

Progression

Higher Education and careers in psychology and sociology, as well as careers in the criminal justice sector like the probation service, court services and the police

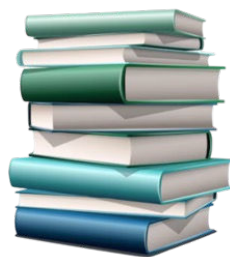
Entry Requirements

Five GCSEs at grade 5 and above, including English Language and Mathematics.



**Solihull College
& University Centre**

English Literature



A-Level

Tutors: Shabnum Bashir
Lucy Hammond
Humma Mouzam

Course Aims

AQA A-Level English Literature is an engaging and exciting approach to the study of literature through the ages. This course encourages the independent study of a variety of texts. Students will develop a wide range of skills valuable for both further study and future employment. These skills include critical reading and the ability to undertake independent research.

Course Content

Students will study a Shakespeare play and a poetry anthology, all through the lens of Love through the Ages. This course also involves studying a novel and producing a piece of writing based on independent study.

What makes a successful A-Level English Literature student?

- Demonstrating a commitment to independent research
- Analysing texts with a keen eye for detail and willingness to explore different interpretations
- Using writing skills to convey ideas with clarity

How will I be assessed?

There will be two exams at the end of year two plus coursework:

- Paper 1- 40% of A-Level (3 hour written exam)
- Paper 2- 40% of A-Level (2 hours 30 minute written exam)
- Coursework - 20% of A-Level: marked by tutors and moderated by AQA

Progression

Students could progress to Higher Education and careers in teaching, journalism and information services, such as librarianship. The skills developed are also valued in the fields of business and management.

Entry Requirements

Five GCSEs at grade 5 and above – this must include GCSE English Language and GCSE Mathematics



Solihull College
& University Centre

History



A-Level

Tutor: Chris Hourihan

Course Aims

AQA A-Level History aims to help students explore the roles of individuals in history and the significance of historical events. This course will develop understanding of modern British and European history and help students to acquire the skills of a historian. Students will have the opportunity to gain a deeper understanding of the past, including economic, cultural, political and social perspectives. They will evaluate evidence from academic history books and synthesise conclusions – a valuable skill for further study and future employment.

Course Content

- Breadth study: Germany 1918–45
- Depth study: Stuart Britain 1603–1702
- Coursework:
 - » 3500–4500 words
 - » Student's topic of choice – a question in the context of approximately 100 years (not duplicating the content of the breadth and depth studies)

What makes a successful A-Level History student?

- Demonstrating a commitment to reading and research
- Seeking out new information and perspectives about the past
- Using critical thinking to evaluate evidence
- Using written and verbal communication skills to express ideas clearly and persuasively

How will I be assessed?

There will be two exams at the end of year two plus coursework:

- Breadth study written exam - 40% of A-Level (2 hours 30 minutes)
- Depth study written exam - 40% of A-Level (2 hours 30 minutes)
- Coursework - 20% of A-Level. Marked by tutor and moderated by AQA

Progression

Students could progress to Higher Education and careers like teaching and museum work. The skills developed are also valued in public services, business and journalism.

Entry Requirements

Five GCSEs at grade 5 and above – this must include GCSE English Language and GCSE Mathematics



**Solihull College
& University Centre**

Law



A-Level

Tutor: Momna Alam

Course Aims

AQA A-Level Law aims to give students an understanding of the role of Law in society and raises their awareness of individual rights and responsibilities. Topics include the nature of law and the English legal system, private law, public law and legal skills. Students will learn about legal rules and how and why they apply to real life.

Course Content

- The nature of law and the English legal system
- Criminal law
- Tort
- Law of contract
- Human rights

What makes a successful A-Level Law student?

- Demonstrating a commitment to reading around theories and case studies
- Using critical thinking to examine problems, identify issues and develop logical arguments
- Using written and verbal communication skills to convey arguments with confidence

How will I be assessed?

At the end of year two, there will be three written exams:

- Paper 1: Criminal Law: The nature of law and the English legal system - 33.3% of A-Level (2 hours)
- Paper 2: Tort: The nature of law and the English legal system - 33.3% of A-Level (2 hours)
- Paper 3: Law of contract or human rights: The nature of law and the English legal system - 33.3% of A-Level (2 hours)

Entry Requirements

Five GCSEs at grade 5 and above – this must include GCSE English Language and GCSE Mathematics

Progression

Higher Education and working in the probation service, court services and police, as well as Solicitor, Barrister, Legal Executive and Paralegal careers



**Solihull College
& University Centre**

Mathematics

A-Level

Tutor: Balbinder Paneser



Course Aims

Edexcel A-Level Mathematics helps students to understand mathematical processes in a way that fosters confidence and enjoyment. Students are encouraged to see the links between different areas of Mathematics, as well as understanding how their mathematical skills can be applied to other fields of study. This course develops a valuable skillset, including problem-solving skills and the ability to make logical and reasoned decisions.

Course Content

- **Pure Mathematics:** proof, algebra and functions, coordinate geometry in the (x, y) plane, sequences and series, trigonometry, exponentials and logarithms, differentiation, integration, numerical methods, and vectors
- **Statistics:** sampling, data presentation and interpretation, probability, statistical distributions, and hypothesis testing
- **Mechanics:** quantities and units in mechanics, kinematics, forces and Newton's laws, and moments

What makes a successful A-Level Mathematics student?

- Tackling challenges with a positive mindset and determination to learn from mistakes and setbacks
- Using written and verbal communication skills to convey mathematical reasoning and solutions with confidence and clarity
- Taking personal responsibility for learning, including self-evaluation of progress

How will I be assessed?

At the end of year two, there will be three written exams and each exam will last two hours:

- Paper 1: Pure Mathematics 1 (33.3% of A-Level)
- Paper 2: Pure Mathematics 2 (33.3% of A-Level)
- Paper 3: Statistics and Mechanics (33.3% of A-Level)

Progression

Higher Education and careers in accountancy, computing, economics, engineering and science.

Entry Requirements

GCSE Mathematics at grade 6 or above plus four further GCSEs at grade 5 and above – this must include GCSE English Language.



Solihull College
& University Centre

Media Studies

A-Level



Course Aims

WJEC Eduqas A-Level Media Studies aims to develop students' creativity and analytical thinking through the study of contemporary media, as well as providing hands-on experience in media production. Students will create original projects such as short films or print-based media. They will explore how media influences society using a theoretical framework that includes audiences, media language, representation and media industries. Students will study several media types in depth, such as newspapers, magazines, video games, music videos, radio, television and film. This course equips students with valuable transferable skills in critical analysis and communication, which are useful across a wide range of careers.

Course Content

- Media Products, Industries and Audiences
 - » Analysing Media Language and Representation: advertising, marketing, music videos, newspapers
 - » Understanding Media Industries and Audiences: advertising, marketing, film, newspapers, radio, video games – and media contexts
- Media Forms and Products in Depth: television in the global age, magazines, media in the online age
- Cross-Media Production: coursework element

What makes a successful A-Level Media Studies student?

- Demonstrating originality and creative thinking
- Nurturing a curious mindset, engaging with a variety of forms of media
- Demonstrating strong analytical skills, paying attention to detail
- Thriving on undertaking hands-on work – practical media production tasks
- Demonstrating the ability to reflect on your own work, as well as that of others

How will I be assessed?

Students will be assessed via two written exams and a non-exam assessment:

- Media Products, Industries and Audiences - 2 hours 15 minutes written exam (35% of A-Level)
- Media Forms and Products in Depth - 2 hours 30 minutes written exam (35% A-Level)
- Cross-Media Production - non-exam assessment (30% of A-Level)

Progression

Higher education and careers in media production, public relations, and broadcast or print journalism.

Entry Requirements

Five GCSEs at grade 5 and above – this must include GCSE English Language and GCSE Mathematics.



**Solihull College
& University Centre**

Art and Design (Photography)



A-Level

Tutor: Clive Adams

Course Aims

AQA A-Level Art and Design (Photography) enables students to explore a variety of photographic media, techniques and processes. This course covers both traditional and digital technologies. Students will investigate past and recent images, artefacts and resources, including European and non-European examples. They will gain an understanding of the elements of visual language, as well as an awareness of the purpose of their chosen specialist area.

Course Content

Genres of photography:

Portraiture, landscape, documentary, fashion, experimental image-making, and moving image

Skills and techniques:

- Responding to briefs
- Exploring line, form, colour, pattern and texture
- Appreciation of viewpoint, composition, aperture, depth of field, shutter speed and movement
- Using cameras, film, lenses, filters and lighting
- Production, presentation and layout of images

Knowledge and understanding:

- Materials, processes, technologies and resources
- Conveying and interpreting ideas, feelings and meanings
- Historical and contemporary developments
- Social, environmental, cultural and ethical contexts
- Continuity and change in different styles, genres and traditions

What makes a successful A-Level Photography student?

- Practising techniques, experimenting and embracing feedback
- Demonstrating the ability to read and interpret images
- Appreciating different social and cultural perspectives

Entry Requirements

A GCSE in an art-related subject at grade 5 or above, plus four GCSEs at grade 5 and above – this must include GCSE English Language and GCSE Mathematics

How will I be assessed?

Students will be assessed via practical work and their portfolio:

- Personal investigation - 60% of A-Level (no time limit). Marked by tutor and moderated by AQA
- Externally set assignment - 40% of A-Level (Preparatory period plus 15 hours of supervised time). Marked by the tutor and moderated by AQA

Progression

Higher education and careers in freelance photography, medical photography and forensic photography, as well as working in the creative industries.



**Solihull College
& University Centre**



Course Aims

AQA A-Level Politics aims to offer a deep understanding of how power structures, political systems and ideologies shape society, providing insights into current affairs and fostering informed citizenship. The specification requires an in-depth study of government and politics in the UK and the USA, comparing the two political systems. This will ensure that students develop a critical awareness of the changing nature of politics and the relationships between political ideas, political institutions and political processes. The course will develop valuable transferable skills like critical analysis and essay writing, which are beneficial for university and many careers.

Entry Requirements

Five GCSEs at grade 5 and above – this must include GCSE English Language and GCSE Mathematics.

Course Content

Topics students will cover include:

- **Government and politics of the UK:** the British constitution, structure and role of parliament, the judiciary, democracy and participation, elections and referendums, political parties and pressure groups
- **Government and politics of the USA and comparative politics:** the legislative branch of government – congress, the executive branch of government – president, the electoral process, civil rights, constitutional arrangements
- **Political ideas:** liberalism, conservatism, socialism, nationalism, multiculturalism, anarchism, ecologism

What makes a successful A-Level Politics student?

- Using critical thinking to dissect political information, evaluate arguments and understand the complexities of decision-making processes
- Constructing clear, concise and evidence-based arguments in writing and discussions
- Demonstrating strong research and writing skills, which are essential for exams

How will I be assessed?

There will be three two hour written exams at the end of year two:

- Paper 1: Government and politics of the UK (33% of A-Level)
- Paper 2 (33% of A-Level)
 - » The government and politics of the USA
 - » Comparative politics
- Paper 3: Political ideas (33% of A-Level)

Progression

Students could progress to Higher Education and careers in law, journalism, the civil service and international relations. The skills developed are also valued in public policy and social sciences.



Psychology



A-Level

Tutor: Kayleigh Oakley

Course Aims

AQA A-Level Psychology is designed to stimulate enthusiasm for learning about human behaviour and mental processes. The course aims to foster a thorough understanding of psychological theories and research methods. Students will have the opportunity to develop a valuable skillset, including communication, data analysis and problem-solving skills. These skills will help to ensure that students are ready for Higher Education and careers in Psychology.

Course Content

- **Introductory Topics in Psychology:** Social Influence, Memory, and Attachment
- **Psychology in Context:** Approaches in Psychology, Psychopathology, and Research Methods
- **Issues and Options in Psychology:** Issues and Debates, Gender, Schizophrenia, and Forensic Psychology

What makes a successful A-Level Psychology student?

- Using critical thinking to evaluate psychological theories and research
- Demonstrating the ability to apply concepts to real-life situations
- Engaging in discussions with enthusiasm
- Using written and verbal communication skills to convey ideas with clarity

How will I be assessed?

At the end of year two, there will be three written exams and each exam will last two hours:

- Introductory Topics in Psychology (33.3% of A-Level)
- Psychology in Context (33.3% of A-Level)
- Issues and Options in Psychology (33.3% of A-Level)

Progression

Students could progress to Higher Education and careers like teaching or the helping professions. Psychology is also valued in the fields of business, sport and forensics.

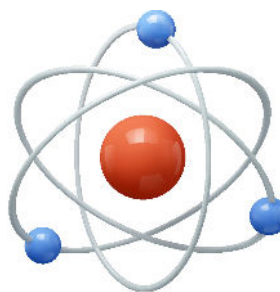
Entry Requirements

Five GCSEs at grade 5 and above. This must include GCSE English Language and GCSE Mathematics



Solihull College
& University Centre

Applied Science



AAQ

Alternative Academic Qualification
(equivalent to one A-Level)

Course Aims

Pearson Level 3 Alternative Academic Qualification (AAQ) BTEC National in Applied Science (Extended Certificate) – equivalent to one A-Level

AAQ Applied Science enables students to explore the principles and applications of biology, chemistry and physics while developing practical laboratory skills and scientific understanding. It provides a balance of theory, investigation and real-world application, supporting progression into Higher Education and science-related careers. Students will learn how science is applied in everyday life and industry through both examined and practical units, building transferable skills such as problem-solving, research, analysis and evaluation.

Entry Requirements

Five GCSEs at grade 5 and above, including English Language, Mathematics and Science

Course Content

Students complete four mandatory units and one optional unit:

- Mandatory units:
 1. Principles and Applications of Biology
 2. Principles and Applications of Chemistry
 3. Principles and Applications of Physics
 4. Practical Scientific Procedures and Techniques
- Optional units (students complete one):
 1. Science Investigation Skills
 2. Contemporary Issues in Science

What makes a successful AAQ Applied Science student?

- Demonstrating an interest in how science works in practical and professional contexts
- Engaging in laboratory-based and independent research tasks with enthusiasm
- Using strong organisational skills to manage assignments and exam preparation
- Demonstrating an ability to link theoretical knowledge with experimental evidence

How will I be assessed?

Assessment is through a blend of external exams and internally assessed coursework:

- External assessments (50% of AAQ): three exams (one each in biology, chemistry, and physics)
- Internal assessments (50% of AAQ): practical and investigative assignments set and verified by Pearson

Progression

Higher Education and careers in applied sport and exercise science, biomedical science, environmental science, nursing, and secondary science education, as well as health and social care professions.



**Solihull College
& University Centre**

Sociology



A-Level

Course Aims

AQA A-Level Sociology focuses on contemporary society. This course fosters awareness of the importance of social structure and social action in explaining social issues. Students are encouraged to develop a thorough understanding of sociological theories and concepts. They are also encouraged to evaluate sociological methodology through active involvement in the research process.

Course Content

- **Mandatory units during year one:** Education, Methods in Context, and Theory and Methods
- **Optional topics during year one and year two:** Families and Households (year one), Beliefs in Society (year two)
- **Mandatory units during year two:** Crime and Deviance, Theory and Methods

What makes a successful A-Level Sociology student?

- Demonstrating a commitment to reading and research
- Using critical thinking to evaluate social issues and research
- Respecting social diversity and keeping an open mind
- Participating in discussions and debates with enthusiasm

How will I be assessed?

At the end of year two, there will be three written exams and each exam will last two hours:

- Education with Theory and Methods (33.3% of A-Level)
- Topics in Sociology (33.3% of A-Level)
- Crime and Deviance with Theory and Methods (33.3% of A-Level)

Progression

Students could progress to Higher Education and careers like social work, teaching, and nursing. Sociology is also valued in the fields of public policy, human resources, research, and police and probation.

Entry Requirements

Five GCSEs at grade 5 and above – this must include GCSE English Language and GCSE Mathematics



Solihull College
& University Centre